

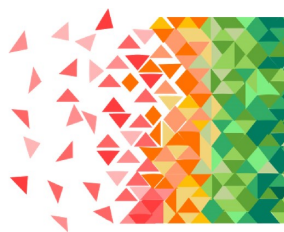
Issue 15

01 September 2020



MONASH UNIVERSITY

ReCAPS Clinician Newsletter



ReCAPS

SUPPORT AFTER STROKE

| Hospital | August Total | Cumulative Total Consented | Cumulative Total Randomised* |
|-------------------------|--------------|----------------------------|------------------------------|
| Peninsula Health | 3 | 33 | 25 |
| Royal Adelaide Hospital | 4 | 26 | 24 |
| Monash Health | 0 | 21 | 18 |
| Alfred Health | 0 | 11 | 10 |
| Eastern Health | 0 | 4 | 4 |
| Sunshine Coast | 0 | 3 | 3 |
| Austin Health | 0 | 3 | 3 |
| Royal Prince Alfred | 0 | 0 | 0 |
| Total | 7 | 101 | 87 |
| Target | 32 | - | 890 |

*excludes participants with pending 7-14 day calls, those who are withdrawn and ineligible

August Updates:

- Phase III ReCAPS celebrated its 1-year anniversary and 100th participant recruited this month. The first 12 month follow-up assessments are due in September.
- We understand that during COVID-19 your time is even more stretched than before. Did you know that the ReCAPS team can complete the baseline assessments if you don't have time, as long as you have obtained consent from the participant?
- Using e-consent is as easy as ticking "Yes" in the screening form once you have added the interested participant's email address. It's that simple!
- You need to make sure the May amendment request has been approved by your RGO for this new process to be enabled at your site.
- Ask Jan or Dawn for more information about how you can adopt these procedures at your hospital!

Project Manager: Dr Jan Cameron

Trial Coordinator: Dawn Harris

Phone: 03-8572 2655 or 03-8572 2649

Email recaps.enquiries@monash.edu

Website www.recaps.com.au

Twitter @ReCAPS_Trial

**ReCAPS
celebrates
1 Year
and 100th
participant**



Recruiter of the Month

Royal Adelaide Hospital

Rajesh Khanna

