

Issue 10

01 April 2020

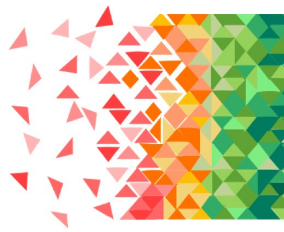


MONASH UNIVERSITY

ReCAPS Clinician Newsletter



MONASH
University



ReCAPS

SUPPORT AFTER STROKE

ReCAPS during COVID-19 restriction measures

These are unique times. We must not lose sight of the fact that stroke survivors will still need support after their discharge from hospital. And perhaps now, more than ever, is a pertinent time to deliver remote support to survivors of acute stroke to maintain best practice care.

As many of your hospitals begin to introduce measures to limit, or temporarily halt recruitment of participants in clinical trials, we are working hard to investigate the implications for ReCAPS. Considering contact with participants after hospital discharge is done remotely (phone/video call/email/SMS) we hope to work with you on ethically-approved alternative ways to recruit eligible people for ReCAPS and gain consent which accommodates the COVID-19 'social distancing' policies.

We believe our study is different from drug or device trials, as there is the potential to include consent procedures and baseline data collection that maintains social distancing. We will be exploring with different HRECs the possibility of an exemption for this study. At this point in time we understand that non-essential contact with others is vital for the safety of our community, in particular the most vulnerable members of society with chronic conditions such as those experienced by your patients.

For those of you who are still permitted to recruit participants, we thank you for your support. For the other sites we will work towards alternative solutions to support your patients and will inform you as soon as we can about our new procedures.

Please call or email Dawn or Jan with any queries.

| Hospital | Mar Total | Cumulative Total Consented | Cumulative Total Randomised* |
|---------------------|-----------|----------------------------|------------------------------|
| Monash Health | 0 | 14 | 12 |
| Peninsula Health | 2 | 15 | 10 |
| Eastern Health | 0 | 1 | 1 |
| Royal Adelaide | 2 | 2 | 2 |
| Sunshine Coast | 1 | 2 | 2 |
| Alfred Health | 1 | 2 | 2 |
| Austin Health | 1 | 1 | 1 |
| Royal Prince Alfred | 0 | 0 | 0 |
| Total | 7 | 37 | 30 |
| Target | 32 | - | 890 |

* Excludes participants with pending 7-14 day calls, those who are withdrawn and ineligible

Translational Public Health and
Evaluation Division

Stroke and Ageing Research
School of Clinical Sciences

Project Manager: Dr Jan Cameron
Trial Coordinator: Dawn Harris
Phone: 03-8572 2655 or 03-8572 2649
Email: recaps.enquiries@monash.edu
Follow us on Twitter @ReCAPS_Trial
www.recaps.com.au

Recruiters of the Month

Royal Adelaide Hospital

Jenni Cranefield
Raj Khanna
Roy Drew

Peninsula Health

Marie Matanas
Natasha Bonanno

